

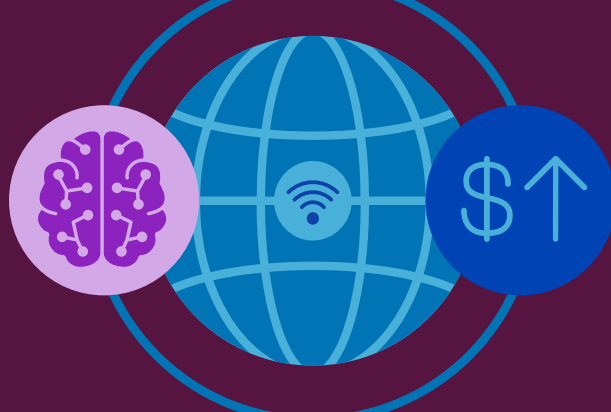


Service Providers: Capitalize on the Growth of Edge AI

Edge AI will create significant opportunities for service providers to monetize AI applications— if they start building, optimizing, and securing their Edge AI infrastructures today.

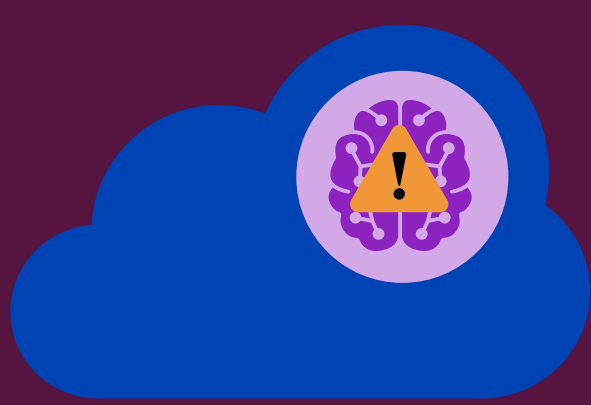
Positioned to power Edge AI

As the first point of connectivity for AI-powered devices, service providers are perfectly positioned to be the key insertion point for Edge AI resource utilization.



Evolve beyond the cloud

Cloud-based AI is impractical for many real-time AI applications, with significant backhaul costs. Edge AI solves that.

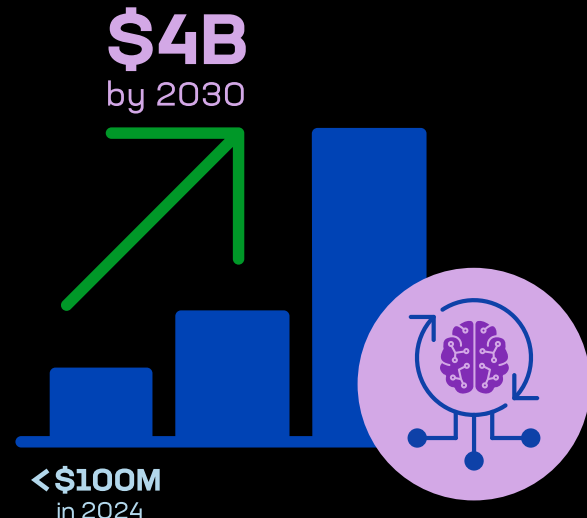
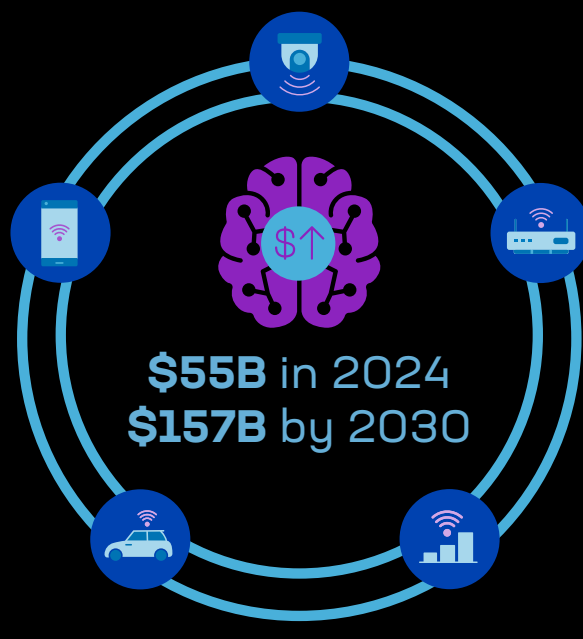


Prepare for the future

By 2030

\$157B

Yearly spending on Edge AI will increase 185% *

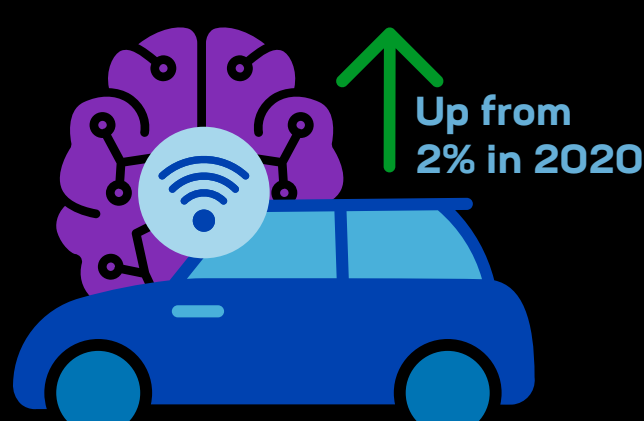


\$4B

Annual investments in Edge AI infrastructure will exceed \$4B in 2030 *

\$2.5B

Revenue from AI applications will surge 317% *

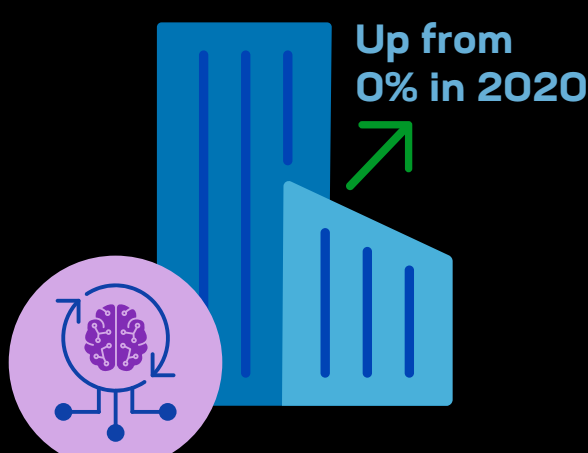


50%

of connected car AI workloads will run at the network edge *

54%

of AI workloads for smart cities will run at the network edge *



Lead the shift to Edge AI

F5 experts can help service providers optimize their Edge AI investments and secure their Edge AI infrastructures with advanced AI solutions. Learn more or contact us today.



For more details, read [How Service Providers Can Capitalize on the Growth of Edge AI](#).

*STL Partners, Edge AI Market Forecast: Computer Vision Leads the Way, 2025



©2025 F5, Inc. All rights reserved. F5, and the F5 logo are trademarks of F5, Inc. in the U.S. and in certain other countries. Other F5 trademarks are identified at f5.com. Any other products, services, or company names referenced herein may be trademarks of their respective owners with no endorsement or affiliation, expressed or implied, claimed by F5, Inc. DC 07/2025 | INFO-WEB-ARTICLE-1639236568